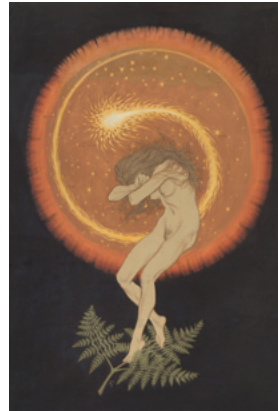


BG

Provenances

Wayfaring Art

7.3. – 13.10.25



Fidus (Hugo Höppener), Tempeltanz der Seele, ca. 1910,
© Copyrights to the artwork expired, Photo: Berlinische Galerie



Martel Schwichtenberg (1896–1945), Akrobaten,
Grotesker Balanceakt, ca. 1922, © Copyrights to the artwork expired



Carl Seiffert, Die blaue Grotte auf Capri, 1861,
© Copyrights to the artwork expired, Photo: Kai-Annett Becker
Restored with the support of Ernst von Siemens Kunststiftung.



Robert Breyer, Die Schauspielerin Mary Franck, 1927,
© Copyrights to the artwork expired, Photo: Kai-Annett Becker
Restored with the support of the Ernst von Siemens Kunststiftung



Installation view "Provenances. Wayfaring Art", Berlinische Galerie,
Photo: © Roman März (works depicted: © VG Bild-Kunst, Bonn 2025)

BG



Installation view "Provenances. Wayfaring Art", Berlinische Galerie,
Photo: © Roman März (works depicted: © VG Bild-Kunst, Bonn 2025)



Installation view "Provenances. Wayfaring Art", Berlinische Galerie,
Photo: © Roman März (works depicted: © VG Bild-Kunst, Bonn 2025)



Installation view "Provenances. Wayfaring Art", Berlinische Galerie,
Photo: © Roman März



Installation view "Provenances. Wayfaring Art", Berlinische Galerie,
Photo: © Roman März